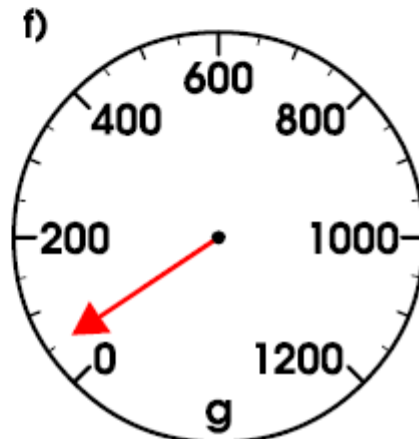
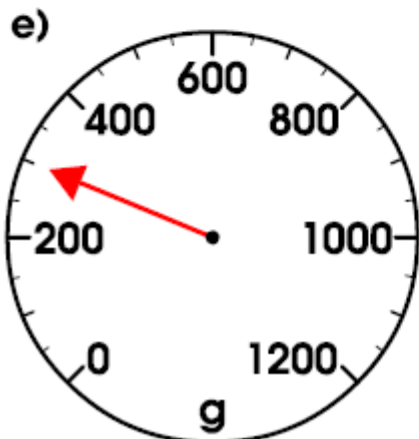
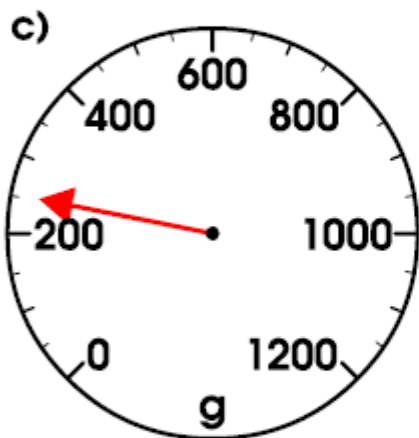
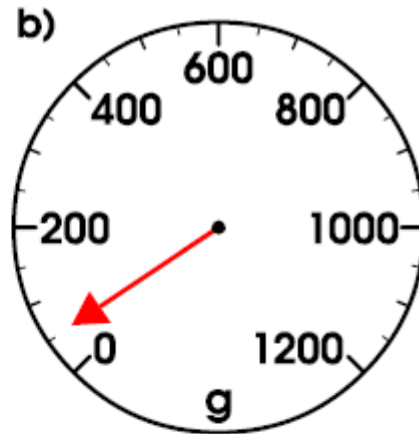
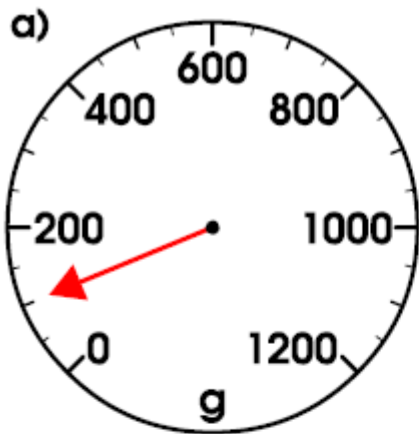


Fill in the missing values, remembering that $1\text{kg} = 1000\text{g}$!

Note: in year 3, we record in kg and g **not** using the decimal point. For example 3500g would be recorded as 3kg and 500g. The introduction of using a decimal point (i.e. to record it as 3.5kg) comes in year 4!

Kilograms and Grams (kg and g)	Grams (g)
2kg	
	4000g
1kg and 200g	
5kg and 800g	
	6250g
	1090g
3kg and 50g	
	750g
	10000g

What mass value is the arrow pointing at?



(a) _____

(b) _____

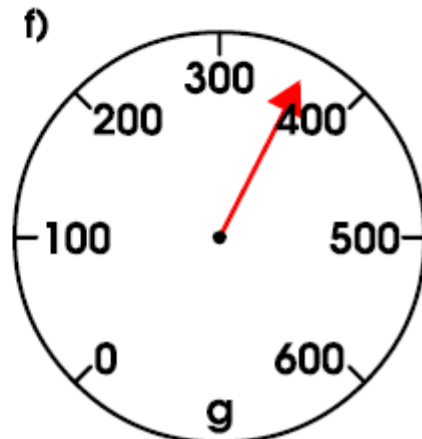
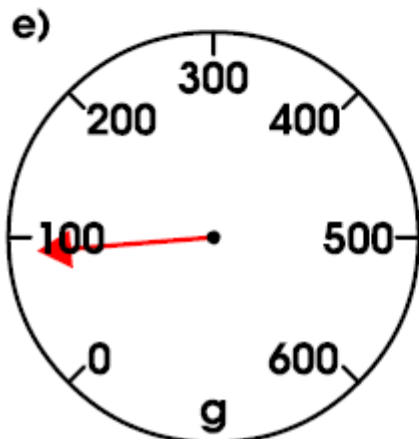
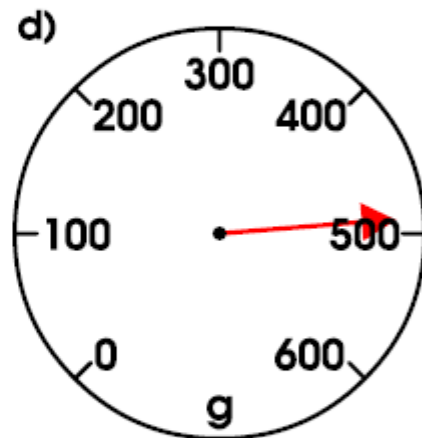
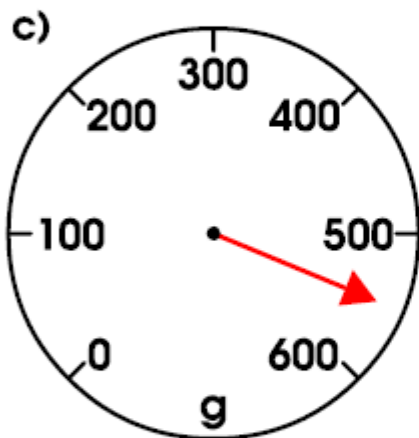
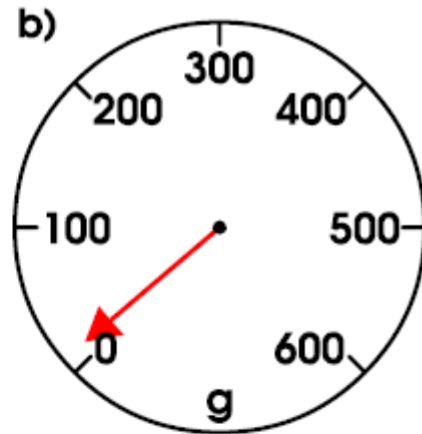
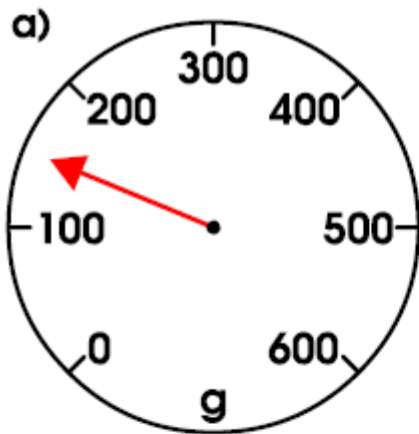
(c) _____

d) _____

e) _____

f) _____

Estimate what mass value the arrow is pointing at?



(a) _____

(b) _____

(c) _____

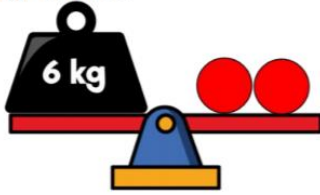
d) _____

e) _____

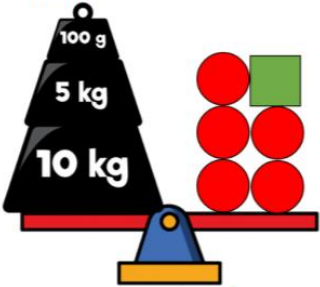
f) _____


3 Challenge Questions...

Here is a balance.



Here is another.



Work out the value of 

The chocolate bar weighs 100 g.
How much does one muffin weigh?



How much does each side weigh?

What weight is on the scales?

How do the scales show this?

